

CLASS 5

ARGO MPC

Multi-pass cell post-compression for Yb-lasers

ARGO MPC is a non-linear pulse compression system with available pump laser integration. It achieves compression factors up to 10x, and pulse durations down to 30 fs with market-leading throughput. Wavelength conversion stages enable 515 nm and 343 nm outputs at short pulse durations. Our new **Class 5 Bridge**, an IoT-enabled modular control system, connects multiple **ARGO** units to build advanced pump-probe setups.

Features

High pulse compression factor

Up to 10x, down to < 30 fs

High power throughput

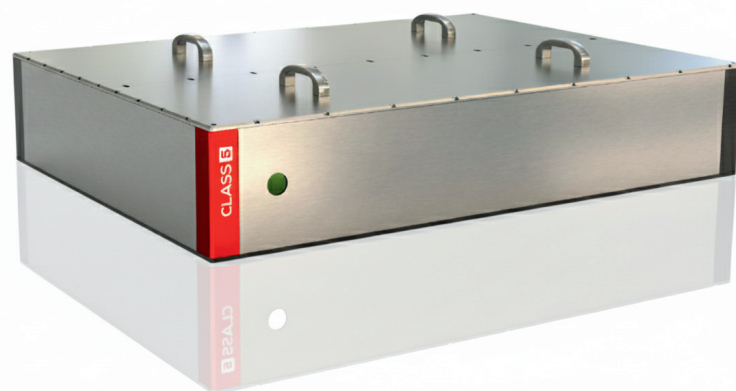
Market-leading conversion efficiency, supporting pump power up to 100W/1.5 mJ.

Pump laser integration available

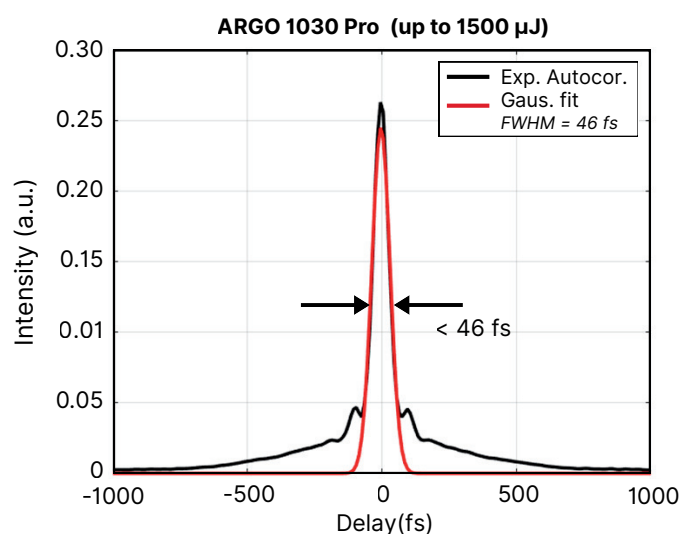
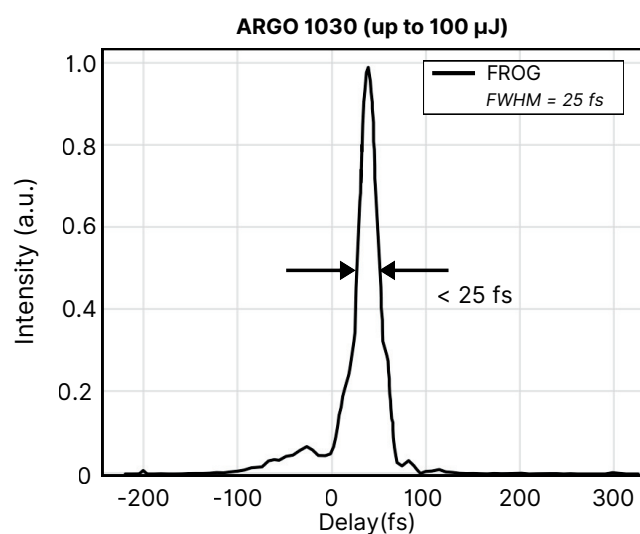
Yb-laser can be integrated into the same housing for optimal compactness and stability.

Class 5 Bridge: Build your pump-probe suite

All ARGO units can be connected to a multi-color pump-probe setup with Class 5 Bridge modular control system.



Performance Examples

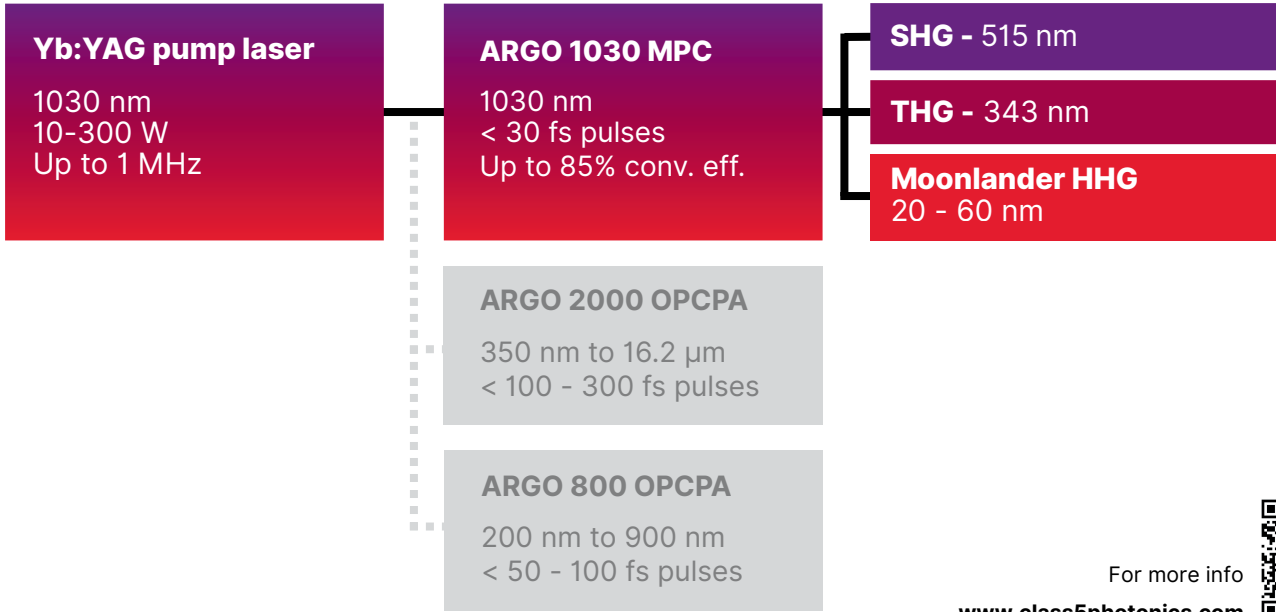


Product Specifications

PRODUCT	ARGO 1030	ARGO 1030 Pro
Wavelength (central)	1030 nm	
Compression factor	10 (single stage)	
Shortest supported pulse duration	< 30 fs	< 50 fs
Conv. eff (at peak)	85% (compressed)	90% (compressed)
Pump energy	20 - 100 µJ	200 - 1500 µJ
Repetition rate	Up to 1 MHz	
Pump laser power	10 - 100W (up to 300W on request)	
SHG / conv.* (@ peak)	515 nm / 30%	
THG / conv.* (@ peak)	343 nm / 5%	
Required gas supply	not required	Krypton / Argon

*conversion efficiencies of compressed 1030 nm MPC output

Class 5 Bridge: Modular control system



For more info
www.class5photonics.com